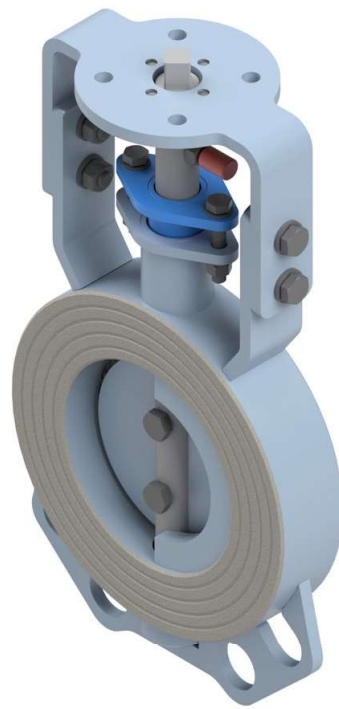
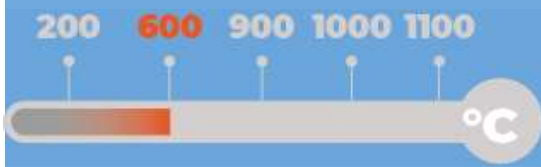


Butterfly valve for gases Type CF-M11 Series

Diameter range DN50 ÷ DN150
Interception or modulating service
Designed for 200 mm of insulation
CE marking

Max temperature 600°C



Operating conditions

- ◆ Design temperature -40°C ÷ 600°C
- ◆ Design pressure -0,1 barg ÷ 3 barg

Applicable standards

- ◆ Design EN 593, EN 12516, ASME B16.34
- ◆ Flanges EN 1092-1, ASME B16.5, others on request
- ◆ Testing EN12266, ANSI/FCI70-2

Ends connections

- ◆ Wafer

Blade seals options

- ◆ No seal Geometric tightness 96%
- ◆ Metal to metal FCI 70-2 max tightness class I
- ◆ Soft sealing FCI 70-2 max tightness class II

Valve actuation

Top flange connections: EN ISO 5210, EN ISO 5211

Actuator types:

- ◆ Manual with lever or handwheel
- ◆ EN 15714-2 Electric actuators
- ◆ EN 15714-3 Pneumatic actuators

Shaft seals options

- ◆ Graphite braid packing
- ◆ Braid packing with lantern ring
- ◆ Seal air cleaning system on shaft

Materials

- ◆ CORTEN A
- ◆ EN 10028-2 steels for high temp.
- ◆ Ferritic, and austenitic stainless steels

Bearing

- ◆ One external bushing