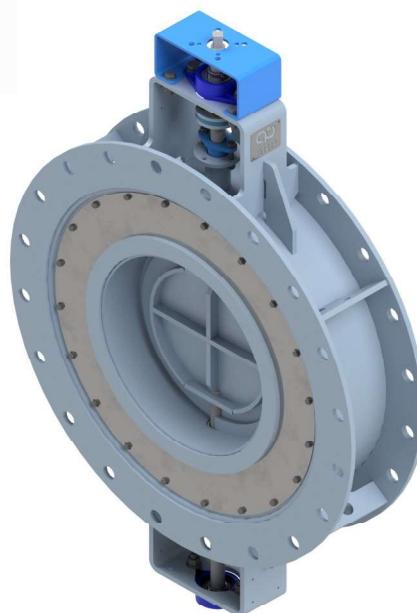
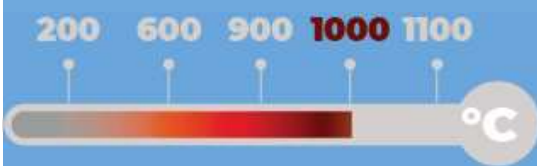


Double body ceramic fiber lined butterfly valve for gases

Type CS-H22 Series

Diameter range DN150 ÷ DN2000
Interception or modulating service
CE marking

Max temperature 1000°C



Operating conditions

- ◆ Design temperature 1000°C
- ◆ Design pressure -0,1 barg ÷ 0,5 bar

Applicable standards

- ◆ Design EN 593, EN 12516, ASME B16.34
- ◆ Flanges EN 1092-1, ASME B16.5, others on request
- ◆ Testing EN12266, ANSI / FCI70-2

Ends connections

- ◆ Bolted flanges

Blade seals options

- ◆ No seal Geometric tightness 96%
- ◆ Metal to metal FCI 70-2 max tightness class II
- ◆ Soft sealing FCI 70-2 max tightness class III / IV

Valve actuation

Top flange connections: EN ISO 5210, EN ISO 5211

Actuator types:

- ◆ Manual with lever or handwheel
- ◆ EN 15714-2 Electric actuators
- ◆ EN 15714-3 Pneumatic actuators

Shaft seals options

- ◆ Ceramic fiber with inconel core braid packing
- ◆ Braid packing with lantern ring
- ◆ Seal air cleaning system on shaft

Materials

Internal parts with hot corrosion and creep resistant alloys:

- ◆ AISI 310S
- ◆ Alloy 253Ma
- ◆ Inconel 601 alloy

Bearing

- ◆ Double shaft with two external bearings