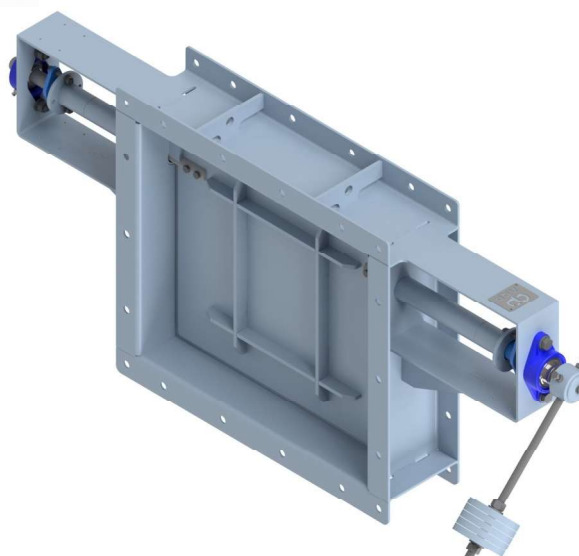
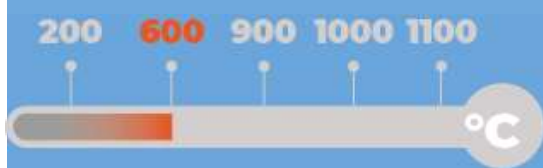


Non return damper for gases Type RC-M21 Series



Size range upon request
Interception service
Designed for 200 mm of insulation
CE marking

Max temperature 600°C



Operating conditions

- ◆ Design temperature $-40^{\circ}\text{C} \div 600^{\circ}\text{C}$
- ◆ Design pressure $-0,1 \text{ barg} \div 0,5 \text{ barg}$

Applicable standards

- ◆ Design EN 593, EN 12516, ASME B16.34
- ◆ Circular flanges EN 1092-1, ASME B16.5, others on request
- ◆ Rectangular flanges according to customer request
- ◆ Testing EN12266, ANSI / FCI70-2

Ends connections

- ◆ Bolted flanges

Blade seals options

- ◆ No seal Geometric tightness 96%
- ◆ Metal to metal FCI 70-2 max tightness class II
- ◆ Soft sealing FCI 70-2 max tightness class III

Valve actuation

- ◆ Counterweight mechanism

Shaft seals options

- ◆ Graphite braid packing
- ◆ Braid packing with lantern ring
- ◆ Seal air cleaning system on shaft

Materials

- ◆ CORTEN A
- ◆ EN 10028-2 steels for high temp.
- ◆ Ferritic, and austenitic stainless steels

Bearing options

- ◆ One external bearing
- ◆ Double shaft with two external bearings