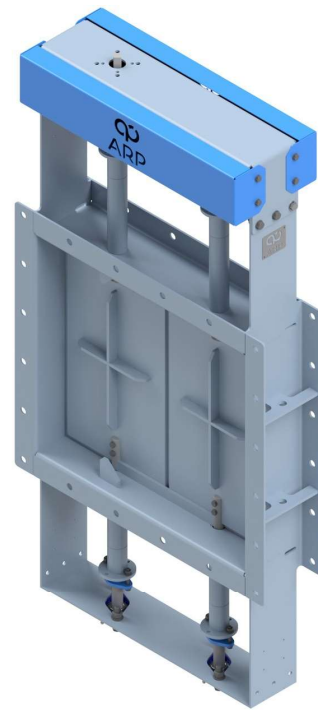
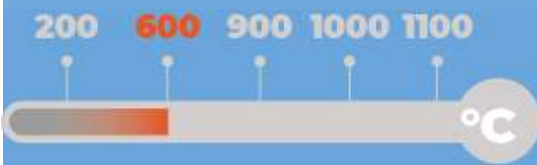


Multi louver damper for gases Type RM-M21 Series

Size range upon request
Interception or modulating service
Designed for 200 mm of insulation
CE marking

Max temperature 600°C



Operating conditions

- ◆ Design temperature $-40^{\circ}\text{C} \div 600^{\circ}\text{C}$
- ◆ Design pressure $-0,1 \text{ barg} \div 0,5 \text{ barg}$

Applicable standards

- ◆ Design EN 593, EN 12516, ASME B16.34
- ◆ Flanges according to customer request
- ◆ Testing EN12266, ANSI/FCI70-2

Ends connections

- ◆ Bolted flanges

Blade seals options

- ◆ No seal Geometric tightness 95%
- ◆ Metal to metal Geometric tightness 96%
- ◆ Harmonic steel Geometric tightness 98%
lamellas
- ◆ Soft sealing Geometric tightness 98%
- ◆ Air sealing Perfect tightness with pressurized
air chamber

Valve actuation

Top flange connections: EN ISO 5210,
EN ISO 5211

Actuator types:

- ◆ Manual with lever or handwheel
- ◆ EN 15714-2 Electric actuators
- ◆ EN 15714-3 Pneumatic actuators

Shaft seals options

- ◆ Graphite braid packing
- ◆ Graphite braid packing
- ◆ Braid packing with lantern ring
- ◆ Seal air cleaning system on shaft

Materials

- ◆ CORTEN A
- ◆ EN 10028-2 steels for high temp.
- ◆ Ferritic, and austenitic stainless steels

Bearing options

- ◆ One external bearing
- ◆ Duple shaft with two external bearings